



Battery Operated Wireless Switch/Dimmer

Product:



Application:

The ASPIRE RF™ Battery Operated Switch/Dimmer controls RF receptacles, switches or dimmers to provide remote ON/OFF/DIM/BRIGHT control. Moreover, the ASPIRE RF Battery Operated Switch/Dimmer provides other programmable functions (association, child lockout, etc...) when used with ASPIRE RF or other Z-Wave® compliant products. The Battery Operated Switch/Dimmer is intended to manually control other Z-Wave devices through RF association. The ASPIRE RF Battery Operated Switch/Dimmer utilizes two CR2025 batteries and mounts flush to the wall. No new wiring is required.

Design Features & Benefits:

- Blue LED displays as follows during sent command:
 - ON — comes on for 2 seconds
 - OFF — blinks once
 - No Response — blinks six times
- Includes single-gang wallplate (9521) and mounting hardware (2 drywall screws and anchors, and 2 pieces of two-sided tape strips)
- Electro-mechanical push pad for ON/OFF operation with separate DIM/BRIGHT bar
- Can be used in existing or new multi-gang installations with use of inner wallplate (RFBS22)
- Works with ASPIRE RF devices for wireless 3-way control, eliminating the need for traditional 3-way wiring or for a dedicated traveller wire
- Uses 200 Series Z-Wave chip at 40Kbs transmission rate
- Single button programming
- Mounts to any flat surface
- Z-Wave Compliant Certified
- Child Lockout feature
- Can be associated with up to 5 other devices
- Goes into Sleep Mode to reduce power consumption & extend battery life (LED is OFF)
- Patented indicator system alerts if dimmer is not set up in the network
- With the award-winning ASPIRE™ Design System aesthetics, ASPIRE RF devices match perfectly with any ASPIRE installation
- Offered in three two-tone custom colors, Desert Sand, Silver Granite and White Satin
- Compatible with ASPIRE Design System screwless wallplates

Performance Specifications:

Performance

Power: (2) CR2025 batteries
 Expected battery life: + 1 year
 Note: Not used as a repeater in RF mesh network.

Performance Consideration

An ASPIRE RF™ Z-Wave® enabled device must be within 60 feet of another Z-Wave enabled device to participate in a Z-Wave wireless mesh network. Any one dimmer or switch can be associated with up to 5 devices (dimmers, switches, receptacles or plug-in modules).

Testing & Code Compliance

cULus Listed Appliance Control 36T0
 Complies with FCC Part 15, Class B
 Z-Wave Compliant Certified



LISTED
 APPLIANCE
 CONTROL 36T0



Terminations

Requires RFBS22 inner wallplate for multi-gang installations.

Note: Battery operated Dimmer/Switch shall not be mounted to an electrical box.

Material Characteristics

Meets flammability rating: V2 per UL94
 Temperature Rating: 32°F to 104°F (0°C to 40°C)

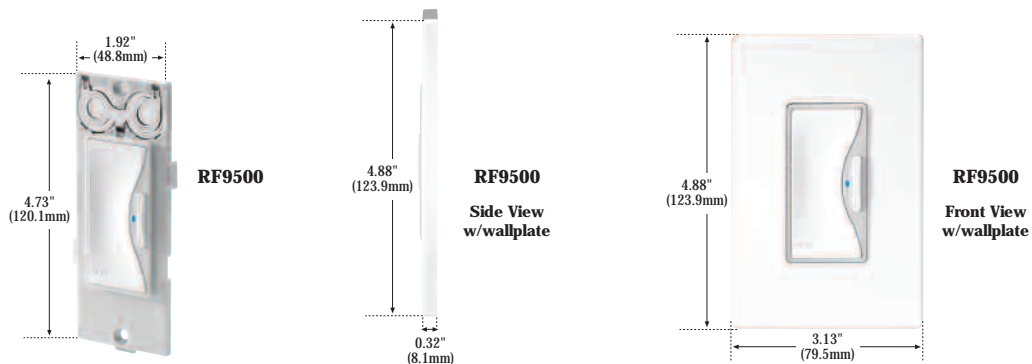
Warranty

- 5 year limited product warranty.
- Product and performance warranties are extended to 10 years if installed as part of an ASPIRE RF Certified Installer System

Installation & Programming:

Please reference the Instruction Sheet included with product for installation and programming. For system programming, see the ASPIRE RF User Manual, which is provided with either the Handheld (RFHDCSG) or Tabletop (RFTDCSG) controllers. Both are also accessible online at www.cooperwiringdevices.com/AspireRF.

Dimensions:

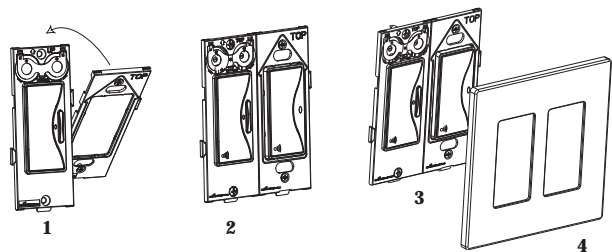


Installation Instructions:

NOTE: RF9500 should be installed on flat surfaces only. DO NOT INSTALL RF9500 ON ELECTRICAL BOXES.

Use RFBS22 for Multi-gang Installations of RF9500.

1. Snap RF9500 into place beside RFBS22 on desired side using interlocking snap features. (Arrow on RF9500 and RFBS22 points up.)
2. Place RFBS22 around already installed device and secure in place using wallplate mounting screws.
3. Secure RF9500 in place using drywall anchors and screws provided.
4. Snap-on multi-gang screwless wallplate (ASPIRE™ Catalog Nos. 9522, 9523, 9524, 9525 or 9526). Wallplates not included.



Ordering Information:

ASPIRE RF™ Battery Operated Dimmer/Switch

Description	Color	CWD Catalog Number
Battery Operated Dimmer/Switch	DS, SG, WS	<input type="checkbox"/> RF9500
Inner Wallplate for Multi-Gang Installation	—	<input type="checkbox"/> RFBS22

To indicate color selection add one of the following suffixes to the Catalog No.: WS (White Satin) DS (Desert Sand), SG (Silver Granite)

Cooper Wiring Devices United States

203 Cooper Circle
 Peachtree City, GA 30269
 P: 866-853-4293 F: 800-329-3055
www.cooperwiringdevices.com

Canada

5925 McLaughlin Road
 Mississauga, Ontario, L5R 1B8
 P: 800-267-1042 F: 800-761-5748

Project Name:	
Project Number:	Date:
Prepared By:	